

Edition

10/2023

Operating Instructions

SITRANS L

Radar transmitters

SITRANS LR120, HART

<https://www.siemens.com/processautomation>

SITRANS L

Radar transmitters SITRANS LR120, HART

Operating Instructions

Preface

Introduction	1
Safety notes	2
Description	3
Installing/mounting	4
Connecting	5
Access protection	6
Setup with smart device (Bluetooth)	7
Operating	8
Setup with SIMATIC PDM EDD	9
Diagnostics and troubleshooting	10
Service and maintenance	11
Certificates and approvals	12
Technical data and dimensions	13

Legal information

Warning notice system

This manual contains notices you have to observe in order to ensure your personal safety, as well as to prevent damage to property. The notices referring to your personal safety are highlighted in the manual by a safety alert symbol, notices referring only to property damage have no safety alert symbol. These notices shown below are graded according to the degree of danger.

 DANGER

indicates that death or severe personal injury will result if proper precautions are not taken.

 WARNING
--

indicates that death or severe personal injury may result if proper precautions are not taken.
--

 CAUTION
--

indicates that minor personal injury can result if proper precautions are not taken.
--

 NOTICE

indicates that property damage can result if proper precautions are not taken.
--

If more than one degree of danger is present, the warning notice representing the highest degree of danger will be used. A notice warning of injury to persons with a safety alert symbol may also include a warning relating to property damage.

Qualified personnel

The product/system described in this documentation may be operated only by **personnel qualified** for the specific task in accordance with the relevant documentation, in particular its warning notices and safety instructions. Qualified personnel are those who, based on their training and experience, are capable of identifying risks and avoiding potential hazards when working with these products/systems.

Proper use of Siemens products

Note the following:

 WARNING
--

Siemens products may only be used for the applications described in the catalog and in the relevant technical documentation. If products and components from other manufacturers are used, these must be recommended or approved by Siemens. Proper transport, storage, installation, assembly, commissioning, operation and maintenance are required to ensure that the products operate safely and without any problems. The permissible ambient conditions must be complied with. The information in the relevant documentation must be observed.
--

Trademarks

All names identified by ® are registered trademarks of Siemens AG. The remaining trademarks in this publication may be trademarks whose use by third parties for their own purposes could violate the rights of the owner.

Disclaimer of liability

We have reviewed the contents of this publication to ensure consistency with the hardware and software described. Since variance cannot be precluded entirely, we cannot guarantee full consistency. However, the information in this publication is reviewed regularly and any necessary corrections are included in subsequent editions.

Table of contents

Preface	v
1 Introduction	1
1.1 Function	1
1.2 Target group	1
1.3 Symbols used	1
2 Safety notes	3
2.1 Authorised personnel	3
2.2 Appropriate use	3
2.3 Warning about incorrect use	3
2.4 General safety instructions	3
2.5 Radar frequencies for worldwide use	4
2.6 Installation and operation in the USA and Canada	4
2.7 Security information	4
3 Description	7
3.1 Configuration	7
3.2 Principle of operation	8
3.3 Adjustment	8
3.4 Packaging, transport and storage	9
3.5 Accessories	10
4 Installing/mounting	11
4.1 General instructions	11
4.2 Mounting versions	11
4.3 Mounting instructions	12
4.4 Measurement setup - Flow	15
5 Connecting	19
5.1 Preparing the connection	19
5.2 Wiring plan	20
5.3 Switch-on phase	20
6 Access protection	21
6.1 Bluetooth radio interface	21
6.2 Protection of the parameterization	21

7	Setup with smart device (Bluetooth)	23
7.1	Connecting	23
8	Operating	25
9	Setup with SIMATIC PDM EDD	31
9.1	Setup with SIMATIC PDM EDD	31
10	Diagnostics and troubleshooting	35
10.1	Maintenance	35
10.2	Rectify faults	35
10.3	Diagnosis, fault messages	36
10.4	Status messages according to NE 107	36
10.5	Treatment of measurement errors	40
10.6	Return procedure	45
10.7	Technical support	45
10.8	How to proceed if a repair is necessary	46
11	Service and maintenance	47
11.1	Dismounting steps	47
11.2	Disposal	47
12	Certificates and approvals	49
12.1	Radio licenses	49
12.2	Approvals for Ex areas	49
12.3	Ship approvals	49
12.4	Approvals as overfill protection	49
12.5	Food and pharmaceutical certificates	50
12.6	Conformity	50
12.7	NAMUR recommendations	50
13	Technical data and dimensions	51
13.1	Technical data	51
13.2	Dimensions	55
13.3	Licensing information for open source software	56
13.4	Trademark	56

Preface

Safety instructions for Ex areas:



 **WARNING**

Take note of the Ex specific safety instructions for Ex applications. These instructions are attached as documents to each transmitter with Ex approval and are part of the operating instructions.

Editing status: 2023-10-26

Introduction






1.1 Function



This instruction provides all the information you need for mounting, connection and setup as well as important instructions for maintenance, fault rectification, safety and the exchange of parts. Please read this information before putting the transmitter into operation and keep this manual accessible in the immediate vicinity of the device.

1.2 Target group

This operating instructions manual is directed to trained personnel. The contents of this manual must be made available to the qualified personnel and implemented.

1.3 Symbols used

	<p>Information, note, tip: This symbol indicates helpful additional information and tips for successful work.</p>
	<p>Note: This symbol indicates notes to prevent failures, malfunctions, damage to devices or plants.</p>
	<p>Caution: Non-observance of the information marked with this symbol may result in personal injury.</p>
	<p>Warning: Non-observance of the information marked with this symbol may result in serious or fatal personal injury.</p>
	<p>Danger: Non-observance of the information marked with this symbol results in serious or fatal personal injury.</p>

	<p>Ex applications This symbol indicates special instructions for Ex applications.</p>
•	<p>List The dot set in front indicates a list with no implied sequence.</p>
1	<p>Sequence of actions Numbers set in front indicate successive steps in a procedure.</p>
	<p>Disposal This symbol indicates special instructions for disposal.</p>

Safety notes

2.1 Authorised personnel

All operations described in this documentation must be carried out only by trained and authorized personnel.

During work on and with the device, the required personal protective equipment must always be worn.

2.2 Appropriate use

SITRANS LR120 is a transmitter for continuous level measurement.

You can find detailed information about the area of application in chapter "*Product description*".

Operational reliability is ensured only if the transmitter is properly used according to the specifications in the operating instructions manual as well as possible supplementary instructions.

2.3 Warning about incorrect use

Inappropriate or incorrect use of this product can give rise to application-specific hazards, e.g. vessel overfill through incorrect mounting or adjustment. Damage to property and persons or environmental contamination can result. Also, the protective characteristics of the transmitter can be impaired.

2.4 General safety instructions

This is a state-of-the-art transmitter complying with all prevailing regulations and directives. The transmitter must only be operated in a technically flawless and reliable condition. The operating company is responsible for the trouble-free operation of the transmitter. When measuring aggressive or corrosive media that can cause a dangerous situation if the transmitter malfunctions, the operating company has to implement suitable measures to make sure the transmitter is functioning properly.

The safety instructions in this operating instructions manual, the national installation standards as well as the valid safety regulations and accident prevention rules must be observed.

2.5 Radar frequencies for worldwide use

For safety and warranty reasons, any invasive work on the device beyond that described in the operating instructions manual may be carried out only by personnel authorised by us. Arbitrary conversions or modifications are explicitly forbidden. For safety reasons, only the accessory specified by us must be used.

To avoid any danger, the safety approval markings and safety tips on the device must also be observed.

The low transmitting power of the radar transmitter is far below the internationally approved limits. No health impairments are to be expected with intended use. The band range of the measuring frequency can be found in chapter ""*Technical data*".

2.5 Radar frequencies for worldwide use

Country or region specific settings for the radar signals are determined via the frequency. The operating mode must be set in the operating menu via Sitrans mobile IQ App at the beginning of the setup.

WARNING

Operating the device without selecting the frequency for the appropriate country or region group constitutes a violation of the regulations of the radio approvals of the respective country or region.

2.6 Installation and operation in the USA and Canada

This information is only valid for USA and Canada. Hence the following text is only available in the English language.

Installations in the US shall comply with the relevant requirements of the National Electrical Code (NEC - NFPA 70) (USA).

Installations in Canada shall comply with the relevant requirements of the Canadian Electrical Code (CEC Part I) (Canada).

A Class 2 power supply unit has to be used for the installation in the USA and Canada.

2.7 Security information

Siemens provides products and solutions with industrial security functions that support the secure operation of plants, systems, machines and networks.

To protect plants, systems, machines and networks against cyber threats, it is necessary to implement (and continuously maintain) a holistic, state-of-the-art industrial security concept. Siemens products and solutions constitute one element of such a concept.

Customers are responsible for preventing unauthorized access to their plants, systems, machines and networks. Such systems, machines and components should only be connected to an enterprise network or the internet if and to the extent such a connection is necessary and only when appropriate security measures (e.g. firewalls and/or network segmentation) are in place.

For additional information on industrial security measures that may be implemented, please visit <https://www.siemens.com/industrialsecurity>

Siemens products and solutions undergo continuous development to make them more secure. Siemens strongly recommends that product updates are applied as soon as they are available and that the latest product versions are used. Use of product versions that are no longer supported, and failure to apply the latest updates may increase customer's exposure to cyber threats.

To stay informed about product updates, subscribe to the Siemens Industrial Security RSS Feed under: <https://www.siemens.com/industrialsecurity>

Description

3.1 Configuration

Scope of delivery

The scope of delivery encompasses:

- SITRANS LR120 radar transmitter
- Information sheet "*Documents and software*" with:
 - Transmitter serial number
 - QR code with link for direct scanning
- Information sheet "*Device Bluetooth and Parameter Access Codes*" with:
 - Bluetooth PIN
 - Bluetooth PUK
 - Device Access PUK

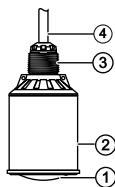
The further scope of delivery encompasses:

- Documentation
 - Ex-specific "*Safety instructions*" (with Ex versions)
 - Radio licenses
 - If necessary, further certificates

Note

Optional transmitter features are also described in this operating instructions manual. The respective scope of delivery results from the order specification.

Constituent parts



- ① Radar antenna

3.2 Principle of operation

- ② Electronics housing
- ③ Mounting thread
- ④ Connection cable

Figure 3.1 Components of SITRANS LR120

Nameplate

The nameplate contains the most important data for identification and use of the transmitter:

- Transmitter type
- Information about approvals
- Configuration information
- Technical data
- Serial number of the transmitter
- QR code for device identification
- Numerical code for Bluetooth access (optional)
- Manufacturer information

3.2 Principle of operation

Application area

SITRANS LR120 is a radar transmitter for non-contact, continuous level measurement. It is suitable for liquids and solids in practically all industries.

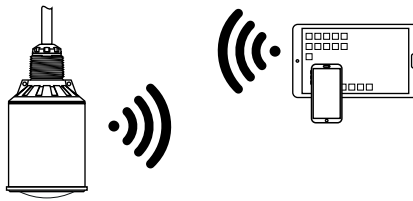
Functional principle

The transmitter emits a continuous, frequency-modulated radar signal through its antenna. The emitted signal is reflected by the medium and received by the antenna as an echo with modified frequency. The frequency change is proportional to the distance and is converted into the level.

3.3 Adjustment

Wireless adjustment

Devices with integrated Bluetooth module can be adjusted wirelessly via Siemens mobile IQ app.

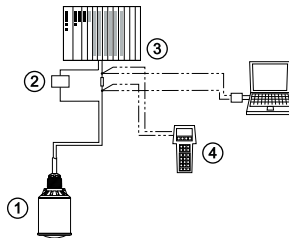


- ① Transmitter
- ② Smart device

Figure 3.2 Wireless connection to standard operating devices with integrated Bluetooth LE

Adjustment via the signal cable

Devices with signal output 4 ... 20 mA/HART can also be operated via a signal cable. This is done via an interface adapter and a PC/notebook using SIMATIC PDM.



- ① Transmitter
- ② HART resistance 250 Ω (optional depending on evaluation)
- ③ Control system
- ④ Handheld

Figure 3.3 Connecting the PC to the signal cable

3.4 Packaging, transport and storage

Packaging

Your transmitter was protected by packaging during transport. Its capacity to handle normal loads during transport is assured by a test based on ISO 4180.

The packaging consists of environment-friendly, recyclable cardboard. For special versions, PE foam or PE foil is also used. Dispose of the packaging material via specialised recycling companies.

Transport

Transport must be carried out in due consideration of the notes on the transport packaging. Nonobservance of these instructions can cause damage to the device.

Transport inspection

The delivery must be checked for completeness and possible transit damage immediately at receipt. Ascertained transit damage or concealed defects must be appropriately dealt with.

Storage

Up to the time of installation, the packages must be left closed and stored according to the orientation and storage markings on the outside.

Unless otherwise indicated, the packages must be stored only under the following conditions:

- Not in the open
- Dry and dust free
- Not exposed to corrosive media
- Protected against solar radiation
- Avoiding mechanical shock and vibration

Storage and transport temperature

- Storage and transport temperature see chapter *Supplement - Technical data - Ambient conditions*
- Relative moisture 20 ... 85 %

3.5 Accessories

Mounting strap

The mounting accessories are used for stable mounting of the device at the measuring point. The parts are available in various versions and sizes.

Installing/mounting

4.1 General instructions

Ambient conditions

The transmitter is suitable for standard and extended ambient conditions acc. to DIN/EN/BS EN/IEC/ANSI/ISA/UL/CSA 61010-1. It can be used indoors as well as outdoors.

Process conditions

Note

For safety reasons, the transmitter must only be operated within the permissible process conditions. You can find detailed information on the process conditions in chapter *Technical data* of the operating instructions or on the nameplate.

Hence make sure before mounting that all parts of the transmitter exposed to the process are suitable for the existing process conditions.

These are mainly:

- Active measuring component
- Process fitting
- Process seal

Process conditions in particular are:

- Process pressure
- Process temperature
- Chemical properties of the medium
- Abrasion and mechanical influences

4.2 Mounting versions

Mounting bracket

For the wall mounting, a mounting bracket with opening for thread G1 is recommended. The mounting of the device in the bracket is carried out via the supplied G1 counter nut of plastic. Take note of chapter *Mounting instructions* for the recommended distance to the wall.

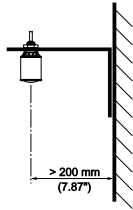


Figure 4.1 Mounting via a mounting bracket

4.3 Mounting instructions

Installation position

When mounting the device, keep a distance of at least 200 mm (7.874 in) from the vessel wall. If the device is installed in the center of dished or round vessel tops, multiple echoes can arise. However, these can be suppressed by an appropriate adjustment (see chapter "Setup").

If you cannot maintain this distance, you should carry out an auto false echo suppression during setup. This applies particularly if buildup on the vessel wall is expected. In such cases, we recommend repeating the auto false echo suppression at a later date with existing buildup.

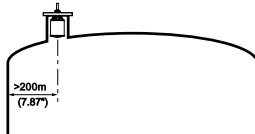
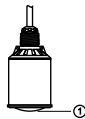


Figure 4.2 Mounting of the radar transmitter on round vessel tops

Reference point

The centre of the antenna lens is the beginning of the measuring range and at the same time the reference point for the min./max. adjustment, see following diagram:



① Reference point

Figure 4.3 Reference point

Inflowing medium

Do not mount the transmitters in or above the filling stream. Make sure that you detect the medium surface, not the inflowing product.

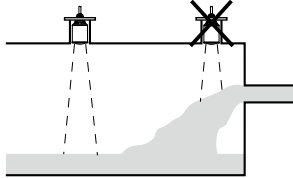


Figure 4.4 Mounting of the radar transmitter with inflowing medium

Nozzle

For nozzle mounting, the nozzle should be as short as possible and its end rounded. This reduces false reflections from the nozzle.

The antenna edge should protrude at least 5 mm (0.2 in) out of the nozzle.

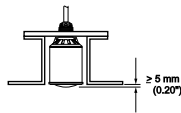


Figure 4.5 Recommended nozzle mounting of SITRANS LR120

If the reflective properties of the medium are good, you can mount SITRANS LR120 on nozzles longer than the antenna. The nozzle end should be smooth and burr-free, if possible also rounded.

Note

When mounting on longer nozzles, we recommend carrying out an auto false echo suppression (see chapter "*Parameter adjustment*").

You will find recommended values for nozzle heights in the following illustration or the table. The values come from typical applications. Deviating from the proposed dimensions, also longer nozzles are possible, however the local conditions must be taken into account.

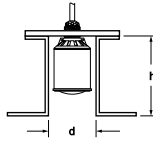


Figure 4.6 Nozzle mounting with deviating nozzle dimensions

Nozzle diameter d		Nozzle length h	
80 mm	3"	≤ 300 mm	≤ 11.8 in
100 mm	4"	≤ 400 mm	≤ 15.8 in
150 mm	6"	≤ 600 mm	≤ 23.6 in

Alignment - Liquids

In liquids, direct the device as perpendicular as possible to the medium surface to achieve optimum measurement results.

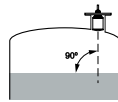


Figure 4.7 Alignment in liquids

Agitators

If there are agitators in the vessel, a auto false echo suppression should be carried out with the agitators in motion. This ensures that the interfering reflections from the agitators are saved with the blades in different positions.

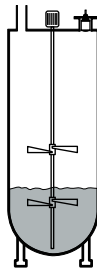


Figure 4.8 Agitators

Foam generation

Through the action of filling, stirring and other processes in the vessel, foams which considerably damp the emitted signals may form on the medium surface.

If foams lead to measurement errors, you should use transmitters with guided radar.

4.4 Measurement setup - Flow

Mounting

In general, the following must be observed while mounting the device:

- Mounting the transmitter on the upstream or inlet side
- Installation in the centre of the flume and vertical to the liquid surface
- Distance to the overfall orifice or Venturi flume
- Distance to the max. height of the orifice or flume for optimum accuracy:
> 250 mm (9.843 in)¹
- Requirements from approvals for flow measurement, e.g. MCERTS

Flume

Predefined curves:

A flow measurement with these standard curves is very easy to set up, as no dimensional information of the flume is required.

- Palmer-Bowlus flume ($Q = k \times h^{1.86}$)
- Venturi, trapezoidal weir, rectangular flume ($Q = k \times h^{1.5}$)
- V-Notch, triangular overfall ($Q = k \times h^{2.5}$)

Channel with dimensions according to ISO standard:

When selecting these curves, the dimensions of the flume must be known and entered via the assistant. As a result, the accuracy of the flow measurement is higher than with the specified curves.

- Rectangular flume (ISO 4359)
- Trapezoidal flume (ISO 4359)
- U-shaped flume (ISO 4359)
- Triangular overfall thin-walled (ISO 1438)
- Rectangular flume thin-walled (ISO 1438)
- Rectangular weir broad crown (ISO 3846)

Flow formula:

¹ The value given takes into account the block distance. At smaller distances, the measuring accuracy is reduced, see *Technical data*.

If the flow formula of your flume is known, you should select this option, as the accuracy of the flow measurement is highest here.

- Flow formula: $Q = k \times h^{\text{exp}}$

Manufacturer definition:

If you use a Parshall flume from the manufacturer ISCO, this option must be selected. This gives you a high accuracy of flow measurement with easy configuration.

Alternatively, you can also take over Q/h table values provided by the manufacturer here.

- ISCO-Parshall-Flume
- Q/h table (assignment of height with corresponding flow in a table)

Note

Detailed project planning data can be found at the channel manufacturers and in the technical literature.

The following examples serve as an overview for flow measurement.

Rectangular overflow

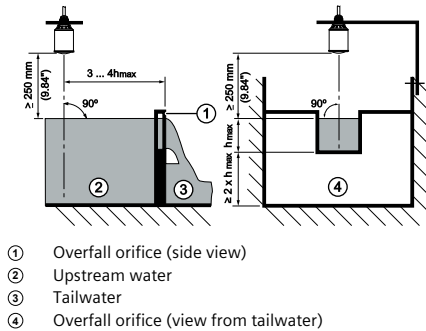
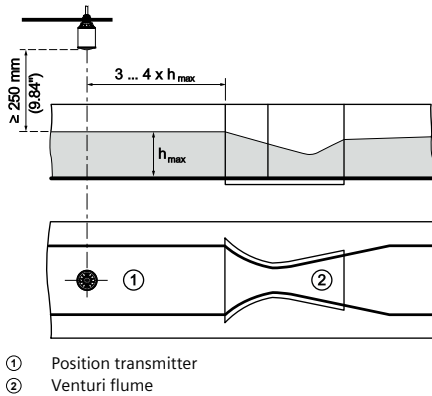


Figure 4.9 Flow measurement with rectangular flume: $h_{\text{max.}}$ = max. filling of the rectangular flume

Khafagi-Venturi flume



- ① Position transmitter
- ② Venturi flume

Figure 4.10 Flow measurement with Khafagi-Venturi flume: h_{max} = max. filling of the flume; B = tightest constriction in the flume

Connecting

5.1 Preparing the connection

Safety instructions

Always keep in mind the following safety instructions:

- Carry out electrical connection by trained, qualified personnel authorised by the plant operator

**WARNING**

Only connect or disconnect in de-energized state.

Voltage supply

The data for power supply are specified in chapter *Technical data*.

Note

Power the transmitter via an energy-limited circuit (power max. 100 W) acc. to IEC 61010-1, e.g.

- Class 2 power supply unit (acc. to UL1310)
- SELV power supply unit (safety extra-low voltage) with suitable internal or external limitation of the output current

Keep in mind the following additional factors that influence the operating voltage:

- Lower output voltage of the power supply unit under nominal load (e.g. with a transmitter current of 20.5 mA or 22 mA in case of fault signal)
- Influence of additional transmitters in the circuit (see load values in chapter *Technical data*)

Connection cable

The device is supplied with a fixed connected cable. If an extension is required, a shielded two-wire cable is recommended.

Shielded cable generally necessary in HART multidrop mode.

Cable screening and grounding

It is recommended to connect the cable screening to ground potential on the supply side.

5.2 Wiring plan

Wire assignment, connection cable

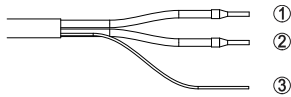


Figure 5.1 Wire assignment in permanently connected connection cable

	Wire colour	Function	Polarity
1	Black	Voltage supply, signal output	Plus (+)
2	White	Voltage supply, signal output	Minus (-)
3		Shielding	

5.3 Switch-on phase

After connection to the power supply, the device carries out a self-test:

- Internal check of the electronics
- Output signal is set to failure

The current measured value is then output on the signal cable.

Access protection

6.1 Bluetooth radio interface

Devices with a Bluetooth radio interface are protected against unwanted access from outside. This means that only authorized persons can receive measured and status values and change device settings via this interface.

Bluetooth PIN

A Bluetooth PIN is required to establish Bluetooth communication via the adjustment tool (smartphone/tablet/notebook). This code must be entered once when Bluetooth communication is established for the first time in the adjustment tool. It is then stored in the adjustment tool and does not have to be entered again.

The Bluetooth PIN is individual for each device. It is supplied with the device in the information sheet "*Device Bluetooth and Parameter Access Codes*". It can be changed by the user after the first connection has been established. If the Bluetooth PIN has not been entered correctly, a new entry can only be made after a waiting period has elapsed. The waiting time increases with each additional incorrect entry.

Bluetooth PUK

The Bluetooth PUK enables Bluetooth communication to be established in the event that the Bluetooth PIN is no longer known. It can't be changed. The Bluetooth PUK can be found in information sheet "*Device Bluetooth and Parameter Access Codes*". If this document is lost, the Bluetooth PUK can be retrieved from your personal contact person after legitimation. The storage and transmission of Bluetooth access codes is always encrypted (SHA 256 algorithm).

6.2 Protection of the parameterization

The settings (parameters) of the device can be protected against unwanted changes. The parameter protection is deactivated on delivery, all settings can be made.

user PIN

To protect the parameterization, the device can be locked by the user with the aid of a freely selectable user PIN. The settings (parameters) can then only be read out, but not changed. The user PIN is also stored in the adjustment tool. However, unlike the Bluetooth PIN, it must be re-entered for each unlock. When using the adjustment app or EDD, the stored user PIN is then suggested to the user for unlocking.

Device Access PUK

The Device Access PUK allows unlocking the device in case the user PIN is no longer known. It can't be changed. The Device Access PUK can also be found on the supplied information sheet ""*Device Bluetooth and Parameter Access Codes*". If this document is lost, the Device Access PUK can be retrieved from your personal contact person after legitimation. The storage and transmission of the user PIN is always encrypted (SHA 256 algorithm).

Setup with smart device (Bluetooth)

7.1 Connecting

Connecting

Start the adjustment app. The smart device searches automatically for Bluetooth-capable transmitters in the area.

The devices found are listed.

Select the requested transmitter in the device list.

Authenticate

When establishing the connection for the first time, the operating tool and the transmitter must authenticate each other. After the first correct authentication, each subsequent connection is made without a new authentication query.

Enter Bluetooth access code

For authentication, enter the 6-digit Bluetooth PIN in the next menu window. You can find the code on the information sheet "*Device Bluetooth and Parameter Access Codes*" in the device packaging.

Note

If an incorrect code is entered, the code can only be entered again after a delay time. This time gets longer after each incorrect entry.

Connected

After connection, the transmitter adjustment menu is displayed on the respective adjustment tool.

Operating

To configure the device:

1. Download and install the *SITRANS mobile IQ* app from the App store to your mobile device.
2. Launch the app. Devices in range will appear.



3. Click on the device you wish to connect to. On first connection, a PIN code shipped with the device needs to be entered (see *Device Bluetooth and Parameter Access Codes* sheet). Following successful PIN entry, the device cockpit will be shown.

The screenshot shows the mobile application interface for the SITRANS LR110. At the top, the status bar displays the time 6:15, signal strength, Wi-Fi, and 100% battery. The app header shows 'SITRANS LR110' and a 'DISCONNECT' button with a menu icon. Below the header is the 'Device cockpit' section, which includes an image of two blue and white transmitters. The device information is as follows:

Product name	Tag	
SITRANS LR110/120		
Serial number	FW version	HW version
JNB/L826000091	1.0.1	1.1.0

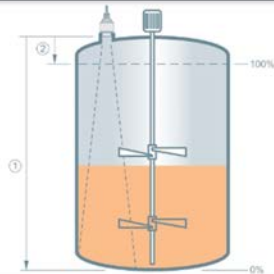
Below the device information is the 'Device status' section, which shows a green checkmark icon, indicating that the device is operational. The 'Current values' section displays the following data:

Level	Distance	Confidence
12.100 m	2.899 m	43 dB
	Percent of range	
	86.429 %	

4. Use the Setup/Quick Commissioning to configure the transmitter for your application type.

10:47 📶 97% 🔋

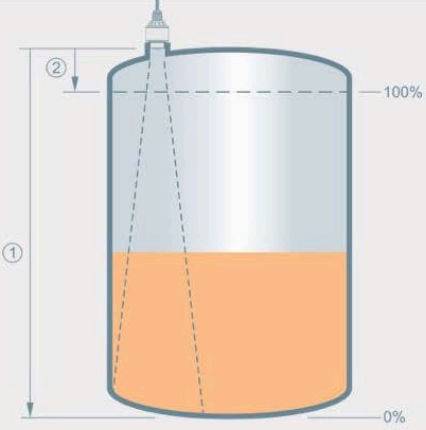
← Setup > Quick commissioning ☰



Units	m	
Lower calibration point 1	15 m	▼
Upper calibration point 2	0 m	▼
Operation	Level	▼
Material type	Liquids	▼
Application	Liquid Process	▼

Setup > Detailed setup > Process values

Level



The diagram shows a cylindrical tank with a rounded bottom. A dashed line indicates the liquid level, which is labeled '100%' on the right. A horizontal dashed line is drawn at the top of the tank, labeled '2' with a circled number. A vertical double-headed arrow on the left side of the tank, extending from the bottom to the top, is labeled '1' with a circled number. The bottom of the tank is labeled '0%' on the right. Below the diagram, the text reads: '1 Lower calibration point' and '2 Upper calibration point'.

1 Lower calibration point
2 Upper calibration point

Frequency Mode 1	⌵
Damping value 0 s	⌵
Operation Level	⌵
Material type Liquid	⌵
Application Demo mode	⌵

- Mode 1: EU, Albania, Andorra, Azerbaijan, Australia, Belarus, Bosnia and Herzegovina, Canada, Liechtenstein, Morocco, Moldavia, Monaco, Montenegro, New Zealand, Northern Macedonia, Norway, San Marino, Saudi Arabia, Serbia, South Africa, Switzerland, Turkey, Ukraine, United Kingdom, USA
- Mode 2: Brazil, Japan, South Korea, Taiwan, Thailand
- Mode 3: India, Malaysia
- Mode 4: Russia, Kazakhstan

Depending on the mode, the metrological properties of the device can change (see chapter *Technical data, input variable*).

Further information can be found in the document *Regulations for radar level measuring transmitters with radio licenses* on our homepage.

Many diagnostic tools are supported, including the echo profile viewer:



Setup with SIMATIC PDM EDD

9.1 Setup with SIMATIC PDM EDD

Device descriptions as Enhanced Device Description (EDD) are available for DD adjustment programs such as for example PDM.

Download

SIMATIC PDM is a software package used to commission and maintain process devices:

<https://support.industry.siemens.com/cs/ww/en/view/109755005>

Check the support page of our website to make sure you have the latest version of SIMATIC PDM, the most recent Service Pack (SP) and the most recent hot fix (HF). Go to:

Software downloads: <http://www.siemens.com/processtransmitteration/downloads>

In the product tree, navigate to: "*Automation Technology > Process Control Systems > SIMATIC PCS 7 > System Components > Plant Device Management > SIMATIC PDM*".

Start

Proceed as follows:

1. Launch SIMATIC PDM, connect to device, and upload data from the device.
2. Adjust parameter values in the parameter value field. Then click Enter. The status fields read "*Changed*".
3. Open the menu "*Device > Download to device...*". When complete, select "*File > Save*" to save the settings offline. The status fields are cleared.

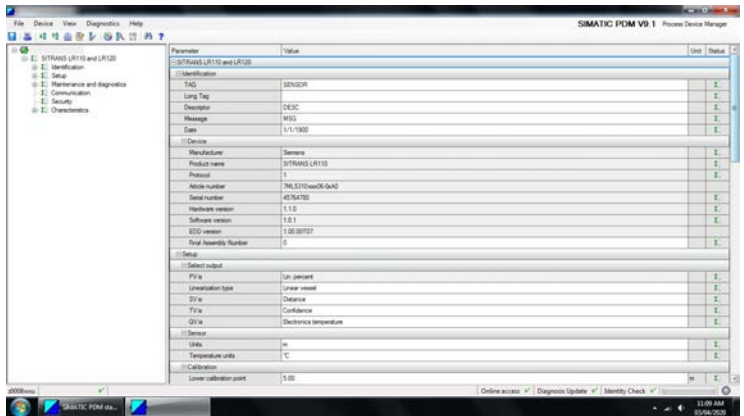


Figure 9.1 PDM structure view EDD offline, start

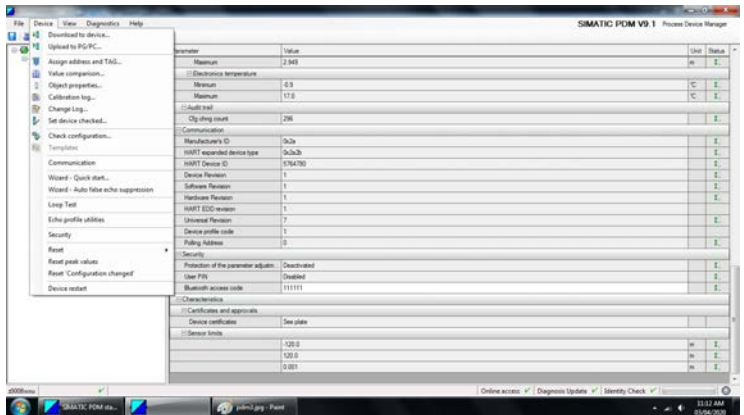


Figure 9.2 PDM structure view EDD offline, continuation

Procedure

Select **"Device / Wizard > Quick Start"** to perform the initial commissioning. Follow the guided commissioning steps according to your specific application.

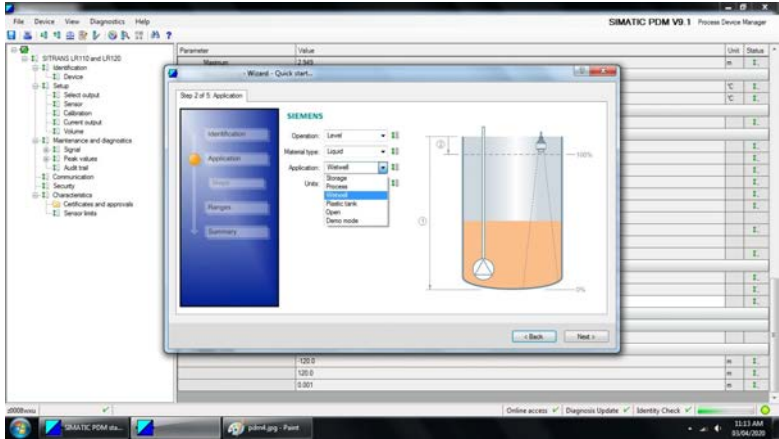
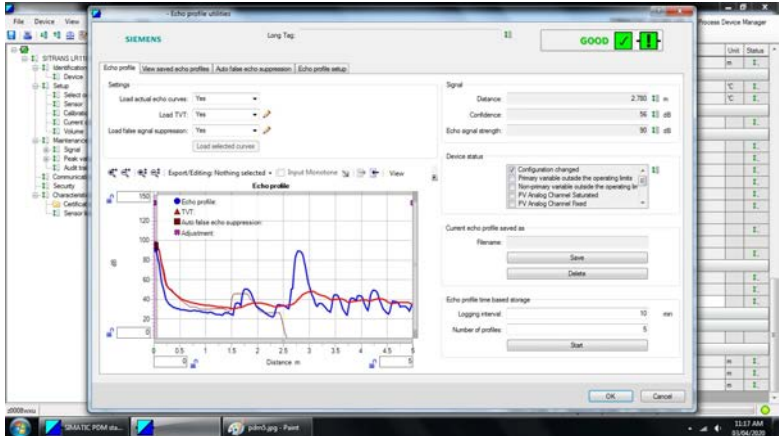


Figure 9.3 PDM quick setup wizard

Select ""Device > Echo profile utilities" to confirm the signal quality. Select the curves to be loaded into the echo profile view, then select ""Load selected curves". Curves and other diagnostic information will be loaded after approximately 45 seconds.



- ① Blue line - echo profile
- ② Red line - TVT
- ③ Brown line - auto false echo suppression (if active)

Figure 9.4 PDM echo profile view

To create a new AFES curve, use the ""Wizard > Auto false echo suppression" from the device menu and enter the distance to the material surface.

SIMATIC PDM supports many other useful features, extensive diagnostic support and asset management. Details are found in the SIMATIC PDM manual here <https://support.industry.siemens.com/cs/ww/en/view/109755005>

Diagnostics and troubleshooting

10.1 Maintenance

Maintenance

If the device is used properly, no special maintenance is required in normal operation.

Precaution measures against buildup

In some applications, buildup on the antenna system can influence the measuring result. Depending on the transmitter and application, take measures to avoid heavy soiling of the antenna system. If necessary, clean the antenna system in certain intervals.

Cleaning

The cleaning helps that the nameplate and markings on the transmitter are visible.

Take note of the following:

- Use only cleaning agents which do not corrode the housings, nameplate and seals
- Use only cleaning methods corresponding to the housing protection rating

10.2 Rectify faults

Reaction when malfunction occurs

The operator of the system is responsible for taking suitable measures to rectify faults.

Causes of malfunction

The device offers maximum reliability. Nevertheless, faults can occur during operation. These may be caused by the following, e.g.:

- Transmitter
- Process
- Voltage supply

- Signal processing

Fault rectification

The first measures are:

- Evaluation of fault messages
- Checking the output signal
- Treatment of measurement errors

A smart device (smartphone/tablet) with the adjustment app or a PC/notebook with the PDM and the suitable EDD offer you further comprehensive diagnostic possibilities. In many cases, the causes can be determined in this way and the faults eliminated.

Reaction after fault rectification

Depending on the reason for the fault and the measures taken, the steps described in chapter ""Setup"" must be carried out again or must be checked for plausibility and completeness.

10.3 Diagnosis, fault messages

4 ... 20 mA signal

Connect a multimeter in the suitable measuring range according to the wiring plan. The following table describes possible errors in the current signal and helps to eliminate them:

Error	Cause	Rectification
4 ... 20 mA signal not stable	Fluctuating measured value	Set damping
4 ... 20 mA signal missing	Electrical connection faulty	Check connection, correct, if necessary
	Voltage supply missing	Check cables for breaks; repair if necessary
	Operating voltage too low, load resistance too high	Check, adapt if necessary
Current signal greater than 22 mA, less than 3.6 mA	Transmitter electronics defective	Replace device or send in for repair depending on device version

10.4 Status messages according to NE 107

The transmitter features self-monitoring and diagnostics according to NE 107 and VDI/VDE 2650. In addition to the status messages in the following tables there are

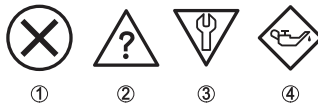
more detailed error messages available under the menu item ""Diagnostics" via the respective adjustment module.

Status messages

The status messages are divided into the following categories:

- Failure
- Function check
- Out of specification
- Maintenance required

and explained by pictographs:



- ① Failure - red
- ② Out of specification - yellow
- ③ Function check - orange
- ④ Maintenance required - blue

Figure 10.1 Pictographs of the status messages

Malfunction (Failure):

Due to a malfunction in the transmitter, a fault signal is output.

This status message is always active. It cannot be deactivated by the user.

Function check:

The transmitter is being worked on, the measured value is temporarily invalid (for example during simulation).

This status message is inactive by default.

Out of specification:

The measured value is unreliable because an transmitter specification was exceeded (e.g. electronics temperature).

This status message is inactive by default.

Maintenance required:

Due to external influences, the transmitter function is limited. The measurement is affected, but the measured value is still valid. Plan in maintenance for the transmitter because a failure is expected in the near future (e.g. due to buildup).

This status message is inactive by default.

Failure

Code Text message	Cause	Rectification	DevSpec State in CMD 48
F013 no measured value available	No measured value in the switch-on phase or during operation	Check or correct installation and/or parameter settings Clean the antenna system	Byte 5, Bit 0 of Byte 0 ... 5
F017 Adjustment span too small	Adjustment not within specification	Change adjustment according to the limit values (difference between min. and max. ≥ 10 mm)	Byte 5, Bit 1 of Byte 0 ... 5
F025 Error in the linearization table	Index markers are not continuously rising, for example illogical value pairs	Check linearization table Delete table/Create new	Byte 5, Bit 2 of Byte 0 ... 5
F036 No operable software	Checksum error if software update failed or aborted	Repeat software update Send transmitter for repair	Byte 5, Bit 3 of Byte 0 ... 5
F040 Error in the electronics	Limit value exceeded in signal processing Hardware error	Restart transmitter Send transmitter for repair	Byte 5, Byte 5, Bit 4 of Byte 0 ... 5
F080 General software error	General software error	Restart transmitter	Byte 5, Byte 5, Bit 5 of Byte 0 ... 5
F105 Determine measured value	The transmitter is still in the switch-on phase, the measured value could not yet be determined	Wait for the end of the switch-on phase Duration up to 3 minutes depending on the measurement environment and parameter settings	Byte 5, Byte 5, Bit 6 of Byte 0 ... 5
F260 Error in the calibration	Checksum error in the calibration values Error in the EEPROM	Send transmitter for repair	Byte 4, Bit 0 of Byte 0 ... 5
F261 Error in the transmitter settings	Error during setup Auto false echo suppression faulty Error when carrying out a reset	Repeat setup Carry out a reset	Byte 4, Bit 1 of Byte 0 ... 5
F265 Measurement function disturbed	Program sequence of the measuring function disturbed	Device restarts automatically	Byte 4, Bit 3 of Byte 0 ... 5

Function check

Code Text message	Cause	Rectification	DevSpec State in CMD 48
C700 Simulation active	A simulation is active	Finish simulation	Simulation Active" in

Code Text message	Cause	Rectification	DevSpec State in CMD 48
		Wait for the automatic end after 60 mins.	"Standardized Status 0"

Out of specification

Code Text message	Cause	Rectification	DevSpec State in CMD 48
S600 Impermissible electronics temperature	Temperature of the electronics in the non-specified range	Check ambient temperature Insulate electronics	Byte 23, Bit 4 of Byte 14 ... 24
S601 Overfilling	Danger of vessel overfilling	Make sure that there is no further filling Check level in the vessel	Byte 23, Bit 5 of Byte 14 ... 24
S603 Impermissible operating voltage	Terminal voltage too small	Check terminal voltage, increase operating voltage	Byte 23, Bit 6 of Byte 14 ... 24

Maintenance

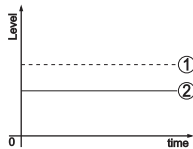
Code Text message	Cause	Rectification	DevSpec State in CMD 48
M500 Error in the delivery status	The data could not be restored during the reset to delivery status	Repeat reset Load XML file with transmitter data into the transmitter	Bit 0 of Byte 14 ... 24
M501 Error in the non-active linearization table	Hardware error EEPROM	Send transmitter for repair	Bit 1 of Byte 14 ... 24
M507 Error in the transmitter settings	Error during setup Error when carrying out a reset Auto false echo suppression faulty	Carry out reset and repeat setup	Bit 7 of Byte 14 ... 24
M508 No executable Bluetooth software	Checksum error in Bluetooth software	Carry out software update	Bit 8 of Byte 14 ... 24
M509 Software update running	Software update running	Wait until software update is finished	Bit 9 of Byte 14 ... 24
M510 No communication	Communication between main electronics and display module disturbed	Check the connection cable to the display Send transmitter for repair	Bit 10 of Byte 14 ... 24

Code	Cause	Rectification	DevSpec
Text message with the main controller			State in CMD 48
M511 Inconsistent software configuration	A software unit requires a software update	Carry out software update	Bit 11 of Byte 14 ... 24

10.5 Treatment of measurement errors

The tables below give typical examples of application-related measurement errors.

The images in column "Error description" show the actual level as a dashed line and the output level as a solid line.



- ① Real level
- ② Level displayed by the transmitter

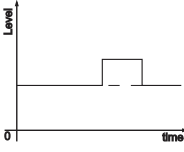
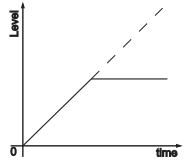
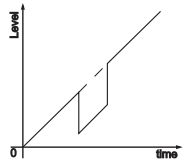
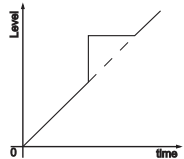
Figure 10.2 Treatment of measurement errors

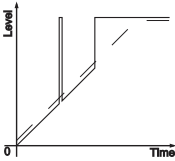
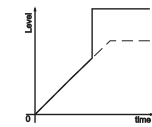
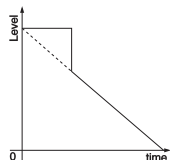
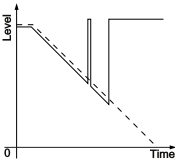
Note

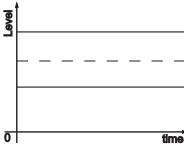
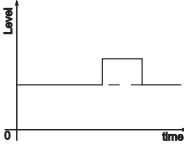
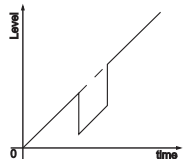
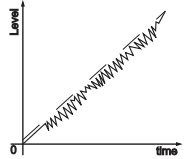
If the output level is constant, the cause could also be the fault setting of the current output to "Hold value".

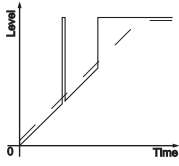
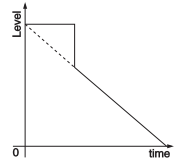
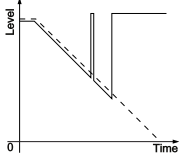
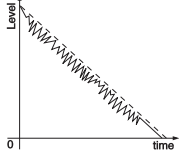
If the level is too low, the reason could be a line resistance that is too high

Fault description	Cause	Rectification
Measured value shows a too low or too high level	Min./max. adjustment not correct	Adapt min./max. adjustment
	Incorrect linearization curve	Adapt linearization curve
Measured value jumps towards 100 %	Due to the process, the amplitude of the level echo sinks	Carry out a auto false echo suppression
	A auto false echo suppression was not carried out	

Fault description	Cause	Rectification
	<p>Amplitude or position of a false signal has changed (e.g. condensation, buildup); auto false echo suppression no longer matches actual conditions</p>	<p>Determine the reason for the changed false signals, carry out auto false echo suppression, e.g. with condensation.</p>
<p>Measured value remains unchanged during filling</p> 	<p>False signals in the close range too big or level echo too small Strong foam or vortex generation Max. adjustment not correct</p>	<p>Eliminate false signals in the close range Check measuring point: Antenna should protrude out of the threaded mounting nozzle, possible false echoes through flange nozzle? Remove contamination on the antenna In case of interferences due to installations in the close range, change polarisation direction Create a new auto false echo suppression Adapt max. adjustment</p>
<p>Measured value jumps towards 0 % during filling</p> 	<p>The level echo cannot be distinguished from the false signal at a false signal position (jumps to multiple echo)</p>	<p>In case of interferences due to installations in the close range: Change polarisation direction Chose a more suitable installation position</p>
<p>Measured value jumps towards 100 % during filling</p> 	<p>Due to strong turbulence and foam generation during filling, the amplitude of the level echo sinks. Measured value jumps to false signal</p>	<p>Carry out a auto false echo suppression</p>
<p>Measured value jumps sporadically to 100 % during filling</p>	<p>Varying condensation or contamination on the antenna</p>	<p>Carry out a auto false echo suppression or increase auto false echo suppression with</p>

Fault description	Cause	Rectification
		condensation/contamination in the close range by editing
Measured value jumps to $\approx 100\%$ or 0 m distance 	Level echo is no longer detected in the close range due to foam generation or false signals in the close range. The transmitter goes into overflow protection mode. The max. level (0 m distance) as well as the status message "Overflow protection" are output.	Check measuring point: Antenna should protrude out of the threaded mounting nozzle, possible false echoes through flange nozzle? Remove contamination on the antenna
Fault description	Cause	Rectification
Measured value remains unchanged in the close range during emptying 	False signal larger than the level echo Level echo too small	Check measuring point: Antenna should protrude out of the threaded mounting nozzle, possible false echoes through flange nozzle? Remove contamination on the antenna In case of interferences due to installations in the close range: Change polarisation direction After eliminating the false signals, the auto false echo suppression must be deleted. Carry out a new auto false echo suppression
Measured value jumps sporadically towards 100 % during emptying 	Varying condensation or contamination on the antenna	Carry out auto false echo suppression or increase auto false echo suppression in the close range by editing
Fault description	Cause	Rectification
Measured value shows a too low or too high level	Min./max. adjustment not correct	Adapt min./max. adjustment
	Incorrect linearization curve	Adapt linearization curve

Fault description	Cause	Rectification
		
Measured value jumps towards 100 %	Due to the process, the amplitude of the product echo decreases A auto false echo suppression was not carried out	Carry out a auto false echo suppression
	Amplitude or position of a false signal has changed (e.g. condensation, buildup); auto false echo suppression no longer matches actual conditions	Determine the reason for the changed false signals, carry out auto false echo suppression, e.g. with condensation.
Fault description	Cause	Rectification
Measured value jumps towards 0 % during filling	The level echo cannot be distinguished from the false signal at a false signal position (jumps to multiple echo)	Remove/reduce false signal: minimize interfering installations by changing the polarization direction Chose a more suitable installation position
	Transverse reflection from an extraction funnel, amplitude of the transverse reflection larger than the level echo	Direct transmitter to the opposite funnel wall, avoid crossing with the filling stream
Measured value fluctuates around 10 ... 20 %	Various echoes from an uneven medium surface, e.g. a material cone	Check parameter "Material Type" and adapt, if necessary Optimize installation position and transmitter orientation
	Reflections from the medium surface via the vessel wall (deflection)	Select a more suitable installation position, optimize transmitter orientation, e.g. with a swivelling holder
Measured value jumps sporadically to 100 % during filling	Changing condensation or contamination on the antenna	Carry out a auto false echo suppression or increase auto false echo suppression with condensation/contamination in the close range by editing

Fault description	Cause	Rectification
		
<p>Measured value remains unchanged in the close range during emptying</p> 	<p>False signal greater than level echo or level echo too small</p>	<p>Eliminate false signals in the close range. Check: Antenna must protrude out of the nozzle Remove contamination on the antenna Minimize interfering installations in the close range by changing the polarization direction After eliminating the false signals, the auto false echo suppression must be deleted. Carry out a new auto false echo suppression</p>
<p>Measured value jumps sporadically towards 100 % during emptying</p> 	<p>Changing condensation or contamination on the antenna</p>	<p>Carry out auto false echo suppression or increase auto false echo suppression in the close range by editing</p>
<p>Measured value fluctuates around 10 ... 20 %</p> 	<p>Various echoes from an uneven medium surface, e.g. an extraction funnel Reflections from the medium surface via the vessel wall (deflection)</p>	<p>Check parameter "Material Type" and adapt, if necessary Optimize installation position and transmitter orientation</p>

10.6 Return procedure

Enclose the delivery note, the return goods delivery note and the decontamination declaration in a clear plastic pouch and attach it firmly to the outside of the packaging. Any devices/replacement parts which are returned without a decontamination declaration will be cleaned at your expense before further processing.

Required forms:

- Delivery note
- Return goods delivery note with the following information: <https://www.siemens.com/processtransmitteration/returngoodsnote>
 - Product (item description)
 - Number of returned devices/replacements parts
 - Reason for returning the item(s)
- Decontamination declaration
 - <https://www.siemens.com/sc/declarationofdecontamination>

With this declaration you warrant that the device/replacement part has been carefully cleaned and is free of residues. The device/replacement part does not pose a hazard for humans and the environment.

If the returned device/replacement part has come into contact with poisonous, corrosive, flammable or water-contaminating substances, you must thoroughly clean and decontaminate the device/replacement part before returning it in order to ensure that all hollow areas are free from hazardous substances. Check the item after it has been cleaned.

Any devices/replacement parts returned without a decontamination declaration will be cleaned at your expense before further processing.

10.7 Technical support

Technical Support

If this documentation does not provide complete answers to any technical questions you may have, contact technical support at www.siemens.com/automation/support-request [<https://www.siemens.com/automation/support-request>].

More information about our technical support is available at www.siemens.com/automation/csi/service [<https://www.siemens.com/automation/csi/service>]

Internet service and support

In addition to our documentation, Siemens provides a comprehensive support solution at www.siemens.com/automation/service&support [<https://www.siemens.com/automation/service&support>]

Contact person

If you have additional questions about the device, please contact your Siemens personal contact at www.automation.siemens.com/partner [<https://www.automation.siemens.com/partner>]

To find the personal contact for your product, go to ""All products and Branches" and select ""Products and services > Industrial automation > Process transmitteration".

Documentation

Documentation on the various products and systems can be found at www.siemens.com/processtransmitteration/documentation [<https://www.siemens.com/processtransmitteration/documentation>].

Certificates

You can find certificates in the Internet under www.siemens.com/processtransmitteration/certificates [<https://www.siemens.com/processtransmitteration/certificates>] or on an included DVD.

10.8 How to proceed if a repair is necessary

If it is necessary to repair the transmitter, please contact Siemens. You find the locations on www.siemens.com/processautomation [<https://www.siemens.com/processautomation>].

Service and maintenance

11.1 Dismounting steps

To remove the device, carry out the steps in chapters ""Mounting" and ""Connecting to power supply" in reverse.

**WARNING**

When dismantling, pay attention to the process conditions in vessels or pipelines. There is a risk of injury, e.g. due to high pressures or temperatures as well as aggressive or toxic media. Avoid this by taking appropriate protective measures.

11.2 Disposal

Pass the transmitter on to a specialised recycling company and do not use the municipal collecting points.

Remove any batteries in advance, if they can be removed from the device, and dispose of them separately.

If personal data is stored on the old device to be disposed of, delete it before disposal.

If you have no way to dispose of the old transmitter properly, please contact us concerning return and disposal.

Further information about devices containing batteries can be found at: (<https://support.industry.siemens.com/cs/document/109479891/>)

Note**Special disposal required**

The device includes components that require special disposal.

- Dispose of the device properly and environmentally through a local waste disposal contractor.
-

Certificates and approvals

12.1 Radio licenses

Radar

The device has been tested and approved in accordance with the current edition of the applicable country-specific norms or standards.

Regulations for use can be found in the document ""*Regulations for radar level measuring transmitters with radio licenses*" on our homepage.

Bluetooth

The Bluetooth radio module in the device has been tested and approved according to the current edition of the applicable country-specific norms or standards.

The confirmations as well as regulations for use can be found in the document ""*Radio licenses*" supplied or on www.siemens.com/level [<https://www.siemens.com/level>].

12.2 Approvals for Ex areas

Approved versions for use in hazardous areas are available or in preparation for the device series.

You can find the respective documents on www.siemens.com/level [<https://www.siemens.com/level>].

12.3 Ship approvals

Approved versions for use on the ship sector are available or in preparation for the device series.

You can find the respective documents on www.siemens.com/level [<https://www.siemens.com/level>].

12.4 Approvals as overfill protection

Approved versions for use as part of an overfill protection system are available or in preparation for this device series.

You can find the respective approvals on www.siemens.com/level [<https://www.siemens.com/level>].

12.5 Food and pharmaceutical certificates

Versions for use in the food and pharmaceutical industries are available or in preparation.

You can find the respective certificates on www.siemens.com/level [<https://www.siemens.com/level>].

12.6 Conformity

The device complies with the legal requirements of the applicable country-specific directives or technical regulations. We confirm conformity with the corresponding labelling.

You can find the corresponding conformity declarations on www.siemens.com/level [<https://www.siemens.com/level>].

12.7 NAMUR recommendations

NAMUR is the automation technology user association in the process industry in Germany. The published NAMUR recommendations are accepted as the standard in field transmitteration.

The device fulfils the requirements of the following NAMUR recommendations:

- NE 21 – Electromagnetic compatibility of equipment
- NE 43 – Signal level for fault information from measuring transducers
- NE 53 – Compatibility of field devices and display/adjustment components
- NE 107 – Self-monitoring and diagnosis of field devices

For further information see www.namur.de [<https://www.namur.de>].

Technical data and dimensions

13.1 Technical data

Note for approved transmitters

Device specifications: Siemens makes every effort to ensure the accuracy of these specifications, but reserves the right to change them at any time.

Device-specific approvals: The device-specific approvals are always to be found on the nameplates on the device.

Materials and weights

Materials, wetted parts	
• Antenna	PVDF
• Counter nut ^a	PP
Materials, non-wetted parts	
• Housing	PVDF
• Cable entry seal	FKM
• Connection cable	PVC
Weight	
• Transmitter	0.7 kg (1.543 lbs)
• Connection cable	0.1 kg/m
Mounting connection	Thread G1, R1, 1 NPT

^a G type threaded connections only

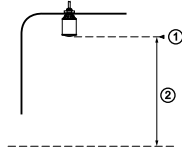
Input variable

Measured variable	The measured variable is the distance between the antenna edge of the transmitter and the medium surface. The antenna edge is also the reference point for the measurement.
Measuring range ^a	0 ... 30 m (0 ... 98.43 ft)
Minimum measuring distance ^b	
• Mode 1, 2, 4	0 mm (0 in)
• Mode 3	≥ 250 mm (9.843 in)

^a Depending on application and medium

^b Depending on the operating conditions

13.1 Technical data

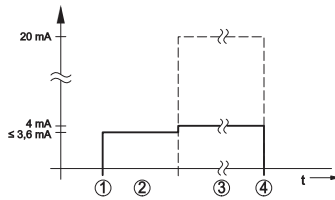


- ① Reference point
- ② Measured variable, max. measuring range

Figure 13.1 Data of the input variable

Switch-on phase

Run-up time for $U_B = 12\text{ V DC}, 18\text{ V DC}, 24\text{ V DC}$	< 15 s
Starting current for run-up time	$\leq 3.6\text{ mA}$
Power consumption	



- ① U_B On
- ② Run-up time
- ③ Measured value output
- ④ U_B Off

Figure 13.2 Run-up time and measured value output

Transmitter current	Operating voltage		
	12 V DC	18 V DC	24 V DC
$\leq 3.6\text{ mA}$	< 45 mW	< 65 mW	< 90 mW
4 mA	< 50 mW	< 75 mW	< 100 mW
20 mA	< 245 mW	< 370 mW	< 485 mW

Output variable

Output signal	4 ... 20 mA/HART
Range of the output signal	3.8 ... 20.5 mA/HART (default setting)
Signal resolution	0.3 μA
Resolution, digital	1 mm (0.039 in)
Fault signal, current output (adjustable)	$\leq 3.6\text{ mA}, \geq 21\text{ mA}$, last valid measured value

Max. output current	22 mA
Starting current	≤ 3.6 mA; ≤ 10 mA for 5 ms after switching on
Load	545 Ohm at 24 V DC
Damping (63 % of the input variable), adjustable	0 ... 999 s
HART output values ^a	
• PV (Primary Value)	Lin. percent
• SV (Secondary Value)	Distance
• TV (Third Value)	Measurement reliability
• QV (Fourth Value)	Electronics temperature
Fulfilled HART specification	7.0
Further information on Manufacturer ID, Device ID, Device Revision	See website of FieldComm Group

^a Default values can be assigned individually.

Deviation (according to DIN EN 60770-1)

Process reference conditions according to DIN EN 61298-1	
• Temperature	+18 ... +30 °C (+64 ... +86 °F)
• Relative humidity	45 ... 75 %
• Air pressure	860 ... 1060 mbar/86 ... 106 kPa (12.5 ... 15.4 psig)
Installation reference conditions	
• Distance to installations	> 200 mm (7.874 in)
• Reflector	Flat plate reflector
• False reflections	Biggest false signal, 20 dB smaller than the useful signal
Deviation with liquids	≤ 2 mm (measuring distance > 0.25 m/0.8202 ft) or ±10 mm (measuring distance 0 ... 0.25 m/0.8202 ft)
Non-repeatability ^a	≤ 2 mm
Deviation with bulk solids	The values depend to a great extent on the application. Binding specifications are thus not possible.

^a Already included in the meas. deviation

Variables influencing measurement accuracy²

Specifications apply to the digital measured value	
Temperature drift - Digital value	< 3 mm/10 K, max. 5 mm
Specifications apply also to the current output	
Temperature drift - Current output	< 0.03 %/10 K or max. 0.3 % relating to the 16.7 mA span
Deviation in the current output due to digital/ analogue conversion	< 15 µA

² Determination of the temperature drift acc. to the limit point method

13.1 Technical data

Additional measurement deviation through electromagnetic interference	
• According to NAMUR NE 21	< 80 µA
• According to EN 61326-1	None
• According to IACS E10 (shipbuilding)/ IEC 60945	< 250 µA

Characteristics and performance data

Measuring frequency	W-band (80 GHz technology)
Measuring cycle time ^a	≤ 250 ms
Step response time ^b	≤ 3 s
Beam angle ^c	4°
Dielectric constant	> 1.6

^a With operating voltage $U_B \geq 24$ V DC

^b Time span after a sudden distance change from 1 m to 5 m until the output signal reaches 90 % of the final value for the first time (IEC 61298-2). Valid with operating voltage $U_B \geq 24$ V DC.

^c Outside the specified beam angle, the energy level of the radar signal is 50% (-3 dB) less.

Ambient conditions

Ambient temperature	-40 ... +80 °C (-40 ... +176 °F)
Storage and transport temperature	-40 ... +80 °C (-40 ... +176 °F)

Mechanical environmental conditions

Vibrations (oscillations)	Class 4M8 acc. to IEC 60721-3-4 (5 g at 4 ... 200 Hz)
Impacts (mechanical shock)	Class 6M4 acc. to IEC 60721-3-6 (50 g, 2.3 ms)
Impact resistance	IK07 acc. to IEC 62262

Process conditions

For the process conditions, please also note the specifications on the nameplate. The lowest value (amount) always applies.	
Process temperature	-40 ... +80 °C (-40 ... +176 °F)
Process pressure	-1 ... 3 bar (-100 ... 300 kPa/-14.5 ... 43.51 psig)

Bluetooth interface

Bluetooth standard	Bluetooth 5.0
Frequency	2.402 ... 2.480 GHz
Max. emitted power	+2.2 dBm
Max. number of participants	1
Effective range	typically 25 m (82 ft) Depending on the local conditions

Adjustment

Smart device	SITRANS mobile IQ
--------------	-------------------

Voltage supply

Operating voltage U_B	
• at 4 mA	12 ... 35 V DC
• at 20 mA	9 ... 35 V DC
Reverse voltage protection	Integrated

Overvoltage protection

Dielectric strength against metallic mounting parts	> 10 kV
Overvoltage resistance (test impulse voltages 1.2/50 μ s at 42 Ω)	> 1000 V
Additional overvoltage arrester	Due to the floating structure of the electronics and comprehensive insulation measures generally not necessary.

Electrical protective measures

Protection rating	IP66/IP68 (3 bar, 24 h) acc. to IEC 60529, Type 6P acc. to UL 50
Altitude above sea level	5000 m (16404 ft)
Protection class	III
Pollution degree	4

13.2 Dimensions

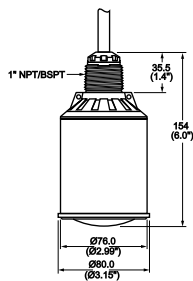


Figure 13.3 Dimensions SITRANS LR120

13.3 Licensing information for open source software

Open source software components are also used in this device. A documentation of these components with the respective license type, the associated license texts, copyright notes and disclaimers can be found on our homepage.

13.4 Trademark

All the brands as well as trade and company names used are property of their lawful proprietor/originator.

For more information

Process Automation
<https://www.siemens.com/processautomation>

Industry Online Support (service and support)
<https://support.industry.siemens.com>

Industry Mall
<https://mall.industry.siemens.com>

Siemens AG
Measurement Intelligence
Process Automation
76181, Karlsruhe
Germany

© 2023 Siemens AG
Subject to change
A5E49829026