



LK SERIES



Small-size threaded diaphragm seals of model LK are suitable for a small plumbings.

Diaphragm seals are suitable especially for the pulp pipes.

Diaphragm seals are manufactured in three sizes: R 1", R 1½", R 2"
 G 1", G 1½", G 2"
 NPT 1", NPT 1½", NPT 2"

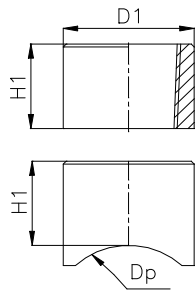
The material of the body is AISI 316 and diaphragm AISI 316L.

Other materials on request.

For small size of the diaphragm we don't recommend to use 1" chemical seal under 4 bar.

The process connections of the diaphragm seals: welding connection for a flat surface
 welding connection with a saddle
 T-coupler with welding ends (body pipe smaller than 1")

Welding connection for flat surface

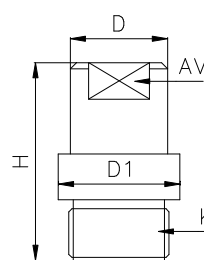


Dimension of welding connection for flat surface		
BSPT- and NPT threads		
	D1	H1
1"	45	25
1½"	65	25
2"	75	25
G-thread		
1"	45	24
1½"	65	24
2"	75	24

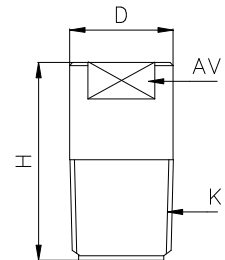
Dimension of welding saddle connection		
Pipe's Ø	G-thread	R- and NPT-threads
Dp	H1	H1
42	24	25
48	24	25
60	24	25
72	24	25
89	24	25

Saddle connection

Dimension of diaphragm seals					
Model	Process thread K	D mm	AV mm	H mm	Diaphragm Ø mm
LK.K6	R 1"	34	27	60	28
LK.K67	R 1½"	48	41	60	42
LK.K66	R 2"	60	50	60	54
LK.R6	G 1"	34	27	60	28
LK.R67	G 1½"	48	41	60	42
LK.R66	G 2"	60	50	60	54
LK.N6	NPT 1"	34	27	60	28
LK.N67	NPT 1½"	48	41	60	42
LK.N66	NPT 2"	60	50	60	54
Nominal pressure 250 bar					



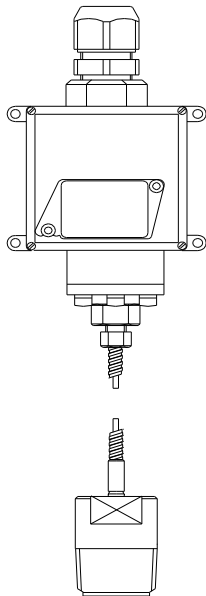
Straight male



Conical- and NPT-treads



LK SERIES



LK remote seal connected to CCS- pressure switch with capillary

LK.	Remote seal with process thread					
	Process connection					
0	Without process connection					
H	Welding connection for flat surface					
H48	Welding connection with saddle for 1 1/2" - 48mm pipe					
H60	Welding connection with saddle for 2" - 60mm pipe					
H76	Welding connection with saddle for 2 1/2" - 76mm pipe					
H89	Welding connection with saddle for 3" - 89mm pipe					
HT17	Welding T-coupler for 3/8" - 17,2mm pipe					
HT21	Welding T-coupler for 1/2" - 21,3mm pipe					
HT26	Welding T-coupler for 3/4" - 26,3mm pipe					
HT33	Welding T-coupler for 1" - 33,7mm pipe					
	Process thread					
K	Conical pipe thread 6 = 1" 67=1 1/2" 66 =2" 667 =2 1/2"					
R	Cylinder pipe thread 6 = 1" 67 =1 1/2" 66 =2" 667 =2 1/2"					
N	NPT-thread 6 = 1" 67 =1 1/2" 66 =2" 667 =2 1/2"					
	Measuring connection					
R	BSP 2=1/2" 3=3/8" 4=1/4" fem. thread 7=1/2" 8=3/8" 9=1/4" male thread					
N	NPT 2=1/2" 3=3/8" 4=1/4" fem. thread 7=1/2" 8=3/8" 9=1/4" male thread					
H	Connected to measuring instrument with capillary					
XM	Connected to transmitter with side connection					
	Capillary					
-	Without capillary or cooling element					
S2H	Cap. 3,00x1,00 mm / 1, 2, 3, 4, 5, 6, 7, 8, 9, 10 m					
S1H	Cap. 3,18x1,76mm/ 1, 2, 3, 4, 5, 6, 7, 8, 9, 10 m					
JK	Cooling element					
	Options					
P /	Diaphragm's extension P / (pipe's diaphragm / lenght)					
	Body	Diaphragm	Wetted parts			
000	AISI 316	AISI 316L	AISI 316			
222	Titanium	Titanium	Titanium			
005	AISI 316	AISI 316L	PTFE			
	See separate data sheet for filling liquids					
LK.	H60	K6	R2	-	-	000
- Diaphragm seal with process thread						
- With connection (saddle for 2" pipe) for DN 50 pipe						
- Process connection size BSPT 1"						
- Connection to measuring equipment female thread G 1/2"						
- Body and wetted parts AISI 316						
-See separate data sheet for filling liquids						